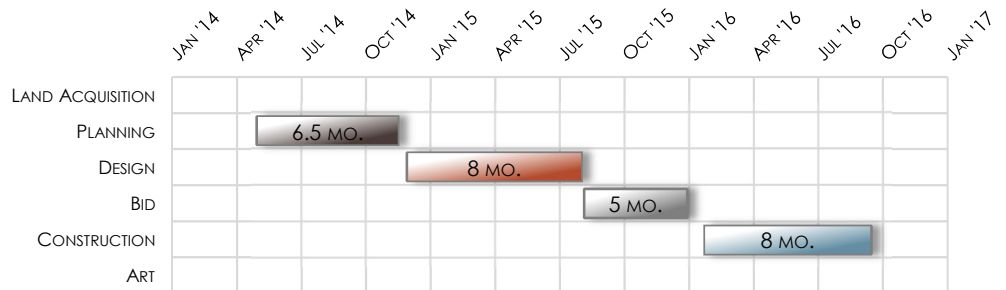
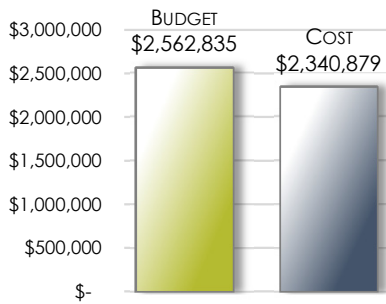


### Project Scope

Villages East Neighborhood Park was one of three neighborhood parks projects included in Commerce City’s voter approved capital improvement program. The project scope comprised planning, design and construction of a 9-acre neighborhood park including picnic and restroom facilities, playground equipment, walking/jogging trails, a multi-use hard court, baseball field, and multi-use playfield. The park was designed to incorporate sustainable landscaping principals and included low-level lighting for safety. A Rocky Mountain theme inspired the play features and shade structures of the park, which is located in the Villages East at Buffalo Run neighborhood and was officially opened to the public in September 2016.

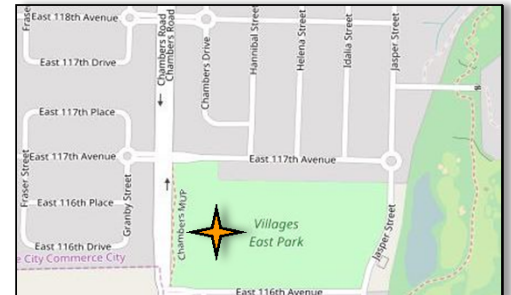


### Project Team

Project Manager: Mike Brown  
 Designer(s): DHM Design  
 Constructor(s): Goodland Construction

### Project Details

Activity Type: New Construction  
 Project Type: Parks/Recreation  
 Delivery Method: Design-Bid-Build  
 Contract Method: Lump Sum



© openstreetmap.org contributors

### Project Photos

Installed playground equipment

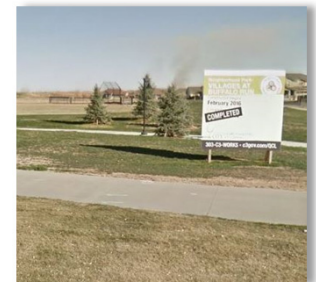


Installed playground equipment



© 2017 Google

Project signage



© 2017 Google

Installed playground equipment



New landscaping and flatwork

